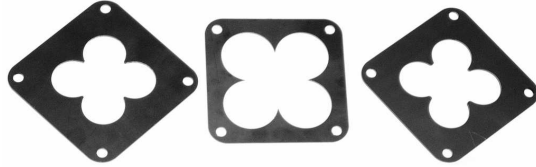


# Collector and Fabrication Components

## Collector Alignment Tools

Once upon a time you had to tack weld your collector to the engine or the frame in order to have something to aim for when building your headers. Here's a better idea! These fixtures give you a reusable tool that saves you from messing up your collector and is also easier to use. Now you can slip tubing and bends through the fixture, mark it, then make your cut. You can't do that when using a collector as your aiming point! 100% reusable! Buy 4 for \$50 and save \$10! Mix-and-match any size or style is ok!



## Stacked 4-into-1 Weld-on Tool

Use to align header tubes for a weld-on collector. Use next size larger (matched to collector) for slip-on collectors.

| Header Tube OD" | Collector Inlet | Description             | Part Number   | Retail   |
|-----------------|-----------------|-------------------------|---------------|----------|
| 1 1/4           | 1 1/4           | For 1.25" OD primaries  | TO-CA4-125125 | \$ 19.97 |
| 1 3/8           | 1 3/8           | For 1.375" OD primaries | TO-CA4-138138 | \$ 19.97 |
| 1 1/2           | 1 1/2           | For 1.50" OD primaries  | TO-CA4-150150 | \$ 19.97 |
| 1 5/8           | 1 5/8           | For 1.625" OD primaries | TO-CA4-163163 | \$ 19.97 |
| 1 3/4           | 1 3/4           | For 1.75" OD primaries  | TO-CA4-175175 | \$ 19.97 |
| 1 7/8           | 1 7/8           | For 1.875" OD primaries | TO-CA4-188188 | \$ 19.97 |
| 2               | 2               | For 2.00" OD primaries  | TO-CA4-200200 | \$ 19.97 |
| 2 1/8           | 2 1/8           | For 2.125" OD primaries | TO-CA4-213213 | \$ 19.97 |
| 2 1/4           | 2 1/4           | For 2.25" OD primaries  | TO-CA4-225225 | \$ 19.97 |
| 2 3/8           | 2 3/8           | For 2.375" OD primaries | TO-CA4-238238 | \$ 19.97 |
| 2 1/2           | 2 1/2           | For 2.50" OD primaries  | TO-CA4-250250 | \$ 19.97 |
| 2 5/8           | 2 5/8           | For 2.625" OD primaries | TO-CA4-263263 | \$ 19.97 |

## Stacked 4-into-1 Slip-Fit Tool

Use this tool when building a header that is going to use slip-on collectors.

| Header Tube OD" | Collector Inlet | Description   | Part Number   | Retail   |
|-----------------|-----------------|---|---------------|----------|
| 1 1/8           | 1 1/4           | For 1.125" OD primaries, use with 1.25" inlet collector | TO-CA4-113125 | \$ 19.97 |
| 1 1/4           | 1 3/8           | For 1.25" OD primaries, use with 1.375" inlet collector | TO-CA4-125138 | \$ 19.97 |
| 1 3/8           | 1 1/2           | For 1.375" OD primaries, use with 1.50" inlet collector | TO-CA4-138150 | \$ 19.97 |
| 1 1/2           | 1 5/8           | For 1.50" OD primaries, use with 1.625" inlet collector | TO-CA4-150163 | \$ 19.97 |
| 1 5/8           | 1 3/4           | For 1.625" OD primaries, use with 1.75" inlet collector | TO-CA4-163175 | \$ 19.97 |
| 1 3/4           | 1 7/8           | For 1.75" OD primaries, use with 1.875" inlet collector | TO-CA4-175188 | \$ 19.97 |
| 1 7/8           | 2               | For 1.875" OD primaries, use with 2.00" inlet collector | TO-CA4-188200 | \$ 19.97 |
| 2               | 2 1/8           | For 2.00" OD primaries, use with 2.125" inlet collector | TO-CA4-200213 | \$ 19.97 |
| 2 1/8           | 2 1/4           | For 2.125" OD primaries, use with 2.25" inlet collector | TO-CA4-213225 | \$ 19.97 |
| 2 1/4           | 2 3/8           | For 2.25" OD primaries, use with 2.375" inlet collector | TO-CA4-225238 | \$ 19.97 |
| 2 3/8           | 2 1/2           | For 2.375" OD primaries, use with 2.50" inlet collector | TO-CA4-238250 | \$ 19.97 |
| 2 1/2           | 2 5/8           | For 2.50" OD primaries, use with 2.625" inlet collector | TO-CA4-250263 | \$ 19.97 |

## Stacked 3-into-1 Weld-on Collector Tool

Use to align header tubes for a weld-on collector. Use next size larger (matched to collector) for slip-on collectors.

| Header Tube OD" | Collector Inlet | Description             | Part Number   | Retail   |
|-----------------|-----------------|-------------------------|---------------|----------|
| 1 1/2           | 1 1/2           | For 1.50" OD primaries  | TO-CA3-150150 | \$ 19.97 |
| 1 5/8           | 1 5/8           | For 1.625" OD primaries | TO-CA3-163163 | \$ 19.97 |
| 1 3/4           | 1 3/4           | For 1.75" OD primaries  | TO-CA3-175175 | \$ 19.97 |
| 1 7/8           | 1 7/8           | For 1.875" OD primaries | TO-CA3-188188 | \$ 19.97 |
| 2               | 2               | For 2.00" OD primaries  | TO-CA3-200200 | \$ 19.97 |

## Stacked 3-into-1 Slip-Fit Collector Tool

Use this tool when building a header that is going to use slip-on collectors.

| Header Tube OD" | Collector Inlet | Description   | Part Number   | Retail   |
|-----------------|-----------------|---|---------------|----------|
| 1 1/2           | 1 5/8           | For 1.50" OD primaries, use with 1.625" inlet collector | TO-CA3-150163 | \$ 19.97 |
| 1 5/8           | 1 3/4           | For 1.625" OD primaries, use with 1.75" inlet collector | TO-CA3-163175 | \$ 19.97 |
| 1 3/4           | 1 7/8           | For 1.75" OD primaries, use with 1.875" inlet collector | TO-CA3-175188 | \$ 19.97 |
| 1 7/8           | 2               | For 1.875" OD primaries, use with 2.00" inlet collector | TO-CA3-188200 | \$ 19.97 |

## 2-into-1 Weld-on Collector Tool

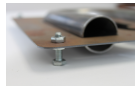
Use to align tubing for a weld-on collector. Reusable.

| Header Tube OD" | Collector Inlet | Description         | Part Number   | Retail   |
|-----------------|-----------------|---------------------|---------------|----------|
| 1               | 1               | For 1.00" OD tubes  | TO-CA2-100100 | \$ 19.97 |
| 1 1/8           | 1 1/8           | For 1.125" OD tubes | TO-CA2-113113 | \$ 19.97 |
| 1 1/4           | 1 1/4           | For 1.25" OD tubes  | TO-CA2-125125 | \$ 19.97 |
| 1 3/8           | 1 3/8           | For 1.375" OD tubes | TO-CA2-138138 | \$ 19.97 |
| 1 1/2           | 1 1/2           | For 1.50" OD tubes  | TO-CA2-150150 | \$ 19.97 |
| 1 5/8           | 1 5/8           | For 1.625" OD tubes | TO-CA2-163163 | \$ 19.97 |
| 1 3/4           | 1 3/4           | For 1.75" OD tubes  | TO-CA2-175175 | \$ 19.97 |
| 1 7/8           | 1 7/8           | For 1.875" OD tubes | TO-CA2-188188 | \$ 19.97 |
| 2               | 2               | For 2.00" OD tubes  | TO-CA2-200200 | \$ 19.97 |
| 2 1/4           | 2 1/4           | For 2.25" OD tubes  | TO-CA2-225225 | \$ 19.97 |
| 2 1/2           | 2 1/2           | For 2.50" OD tubes  | TO-CA2-250250 | \$ 19.97 |
| 3               | 3               | For 3.00" OD tubes  | TO-CA2-300300 | \$ 19.97 |

# Collector and Fabrication Components

## 180 degree U-Bend Cutting Fixtures

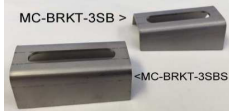
Make consistent cuts across the tangent to ease fabrication! 10 degree increments as well as major markings at 45 and 90 degrees. REUSABLE! Mix-and-match: Buy 4 different sizes for only \$100.00 - save \$25% off individual prices.



| Tube OD" | Centerline Radius | Description  | Part Number    | Retail   |
|----------|-------------------|--|----------------|----------|
| 1 1/4    | 2 1/2             | Fixtures can accommodate bends slightly +/- 180 degrees. Bends beyond tolerance can usually be adjusted to fit fixture. Maximum leg length of fixture is 6.25" beyond tangent. Great for re-using scraps and cut-offs! | TO-CF-1250-180 | \$ 33.28 |
| 1 1/2    | 2 1/2             |  | TO-CF-1500-250 | \$ 33.28 |
| 1 5/8    | 2 1/2             |  | TO-CF-1625-250 | \$ 33.28 |
| 1 3/4    | 2 1/2             |  | TO-CF-1750-250 | \$ 33.28 |
| 1 3/4    | 3                 |  | TO-CF-1750-300 | \$ 33.28 |
| 1 7/8    | 3                 |  | TO-CF-1875-300 | \$ 33.28 |
| 2        | 3                 |  | TO-CF-2000-300 | \$ 33.28 |
| 2 1/8    | 3                 |  | TO-CF-2125-300 | \$ 33.28 |
| 2 1/4    | 3                 |  | TO-CF-2250-300 | \$ 33.28 |
| 2 1/2    | 4                 |  | TO-CF-2500-375 | \$ 33.28 |
| 3        | 4                 |  | TO-CF-3000-400 | \$ 33.28 |
| 3        | 6                 |  | TO-CF-3000-600 | \$ 33.28 |

## Retainers, Springs, and Universal Tabs and Brackets

Can be used with



| Hole Diameter            | Width                 | Length | Description  | Part Number    | Retail   |
|--------------------------|-----------------------|--------|--|----------------|----------|
| .330"                    | .9"                   | 1"     | 304SS 3-sided wing tab for 5/16 bolt (not incl'd). Each. | FL-SCB-3W      | \$ 6.59  |
| .265"                    | .8" high              | 2"     | 304SS Flat tab, for 1/4" bolt (not incl'd).Each.         | FL-SCB-FT      | \$ 4.39  |
| N/A                      | .5"                   | 1.2"   | 304SS 45d laser spring tab. Tab only. Each.              | FL-SCB-ST      | \$ 5.49  |
| N/A                      | .5"                   | 1"     | 304SS Wire spring hook (spring not included). Each.      | FL-SCB-WSR     | \$ 2.93  |
| N/A                      | .4"                   | 2.75"  | 304SS Connector Springs.                                 | FL-SCB-SSP     | \$ 5.86  |
| .563"W x .313"H          | 2"                    | 3"     | 304SS 18g Univers. Mount Bracket, Triangular.            | MC-BRKT        | \$ 6.22  |
| .3125"W x 1.5"L          | 1.375" base           | 2"     | 304SS 16g, .75" high. Angled to fit conical shape.       | MC-BRKT-3SB    | \$ 9.52  |
| .3125"W x 1.5"L          | 1.375" base           | 2"     | 304SS 16g, .75" high. Straight to fit cylinder/tube.     | MC-BRKT-3SBS   | \$ 9.52  |
| Slotted, 1/4-20 bolt     | Tapered, wider @ base | 2"     | Bracket Kit 1. 304SS. Bracket/plate/bolt. 1 hole.        | MC-BRKT-1H3SBA | \$ 13.31 |
| Slotted, 1/4-20 bolt (2) | Straight legs/sides   | 4"     | Bracket Kit 2. 304SS. Bracket/plate/bolts. 2 hole.       | MC-BRKT-2H3SBS | \$ 23.96 |
| .65" hole for 3/8" bolt  | .8"                   | 1.2"   | Univers. Hi-Temp "Snapper" M/F Grommet                   | MU-HANGER-GROM | \$ 5.86  |
| Standard Hose Clamp      | .25"                  | 1.65"  | 304SS 18g Univers. Heat Shield Mount Tab - Large         | MC-HSTAB-LG    | \$ 2.93  |
| Standard Hose Clamp      | .25"                  | 1.1"   | 304SS 18g Univers. Heat Shield Mount Tab - Small         | MC-HSTAB-SM    | \$ 1.46  |

# Collector and Fabrication Components

| Slip Fit Collector Tubing                    |            |        |  |                      |          |
|--|------------|--------|--|----------------------|----------|
| STRAIGHT TUBING 18 GAUGE                     |            |        |  |                      |          |
| 18 gauge Mild Steel*                         |            |        |  |                      |          |
| Part Number                                  | Tubing OD" | Length | Description  | Slip fit for         | Retail   |
| TU-ST18MS-1250                               | 1.25       | 12"    | Slip-Fit Collector 1.125" primary to 1.25" collector     | 1.125                | \$ 8.86  |
| TU-ST18MS-1375                               | 1.375      | 12"    | Slip-Fit Collector 1.25" primary to 1.375" collector     | 1.25                 | \$ 8.86  |
| TU-ST18MS-1500                               | 1.5        | 12"    | Slip-Fit Collector 1.375" primary to 1.50" collector     | 1.375                | \$ 8.86  |
| TU-ST18MS-1625                               | 1.625      | 12"    | Slip-Fit Collector 1.50" primary to 1.625" collector     | 1.5                  | \$ 8.86  |
| TU-ST18MS-1750                               | 1.75       | 12"    | Slip-Fit Collector 1.625" primary to 1.75" collector     | 1.625                | \$ 8.86  |
| TU-ST18MS-1875                               | 1.875      | 12"    | Slip-Fit Collector 1.75" primary to 1.875" collector     | 1.75                 | \$ 12.08 |
| TU-ST18MS-2000                               | 2          | 12"    | Slip-Fit Collector 1.875" primary to 2.00" collector     | 1.875                | \$ 12.08 |
| 18 gauge 304 Stainless Steel*                |            |        |  |                      |          |
| Part Number                                  | Tubing OD" | Length | Description  | Slip fit for         | Retail   |
| TU-ST18SS-1250                               | 1.25       | 12"    | Slip-Fit Collector 1.125" primary to 1.25" collector     | 1.125                | \$ 16.11 |
| TU-ST18SS-1375                               | 1.375      | 12"    | Slip-Fit Collector 1.25" primary to 1.375" collector     | 1.25                 | \$ 16.11 |
| TU-ST18SS-1500                               | 1.5        | 12"    | Slip-Fit Collector 1.375" primary to 1.50" collector     | 1.375                | \$ 16.11 |
| TU-ST18SS-1625                               | 1.625      | 12"    | Slip-Fit Collector 1.50" primary to 1.625" collector     | 1.5                  | \$ 16.11 |
| TU-ST18SS-1750                               | 1.75       | 12"    | Slip-Fit Collector 1.625" primary to 1.75" collector     | 1.625                | \$ 16.91 |
| TU-ST18SS-1875                               | 1.875      | 12"    | Slip-Fit Collector 1.75" primary to 1.875" collector     | 1.75                 | \$ 20.50 |
| TU-ST18SS-2000                               | 2          | 12"    | Slip-Fit Collector 1.875" primary to 2.00" collector     | 1.875                | \$ 20.50 |
| * Limited Availability                       |            |        |  |                      |          |
| SLIP-FIT COLLECTOR: PRE-SIZED SLIP COUPLINGS |            |        |  |                      |          |
| Mild Steel                                   |            |        |  |                      |          |
| Part Number                                  | Tubing OD" | Length | Description  | Fits header diameter | Retail   |
| CN-CLSC-2125-MS                              | 2.125      | 2"     | Slip-Fit Collector 2.00" primary to fit 2.125" collector | 2"                   | \$ 2.99  |
| CN-CLSC-2250-MS                              | 2.25       | 2"     | Slip-Fit Collector 2.125" primary to fit 2.25" collector | 2 1/8"               | \$ 2.99  |
| CN-CLSC-2375-MS                              | 2.375      | 2"     | Slip-Fit Collector 2.25" primary to fit 2.375" collector | 2 1/4"               | \$ 2.99  |
| CN-CLSC-2500-MS                              | 2.5        | 2"     | Slip-Fit Collector 2.375" primary to fit 2.50" collector | 2 3/8"               | \$ 3.33  |
| CN-CLSC-2625-MS                              | 2.625      | 2"     | Slip-Fit Collector 2.50" primary to fit 2.625" collector | 2 1/2"               | \$ 3.33  |
| 304 Stainless Steel                          |            |        |  |                      |          |
| Part Number                                  | Tubing OD" | Length | Description  | Fits header diameter | Retail   |
| CN-CLSC-2125-SS                              | 2.125      | 2"     | Slip-Fit Collector 2.00" primary to fit 2.125" collector | 2"                   | \$ 4.66  |
| CN-CLSC-2250-SS                              | 2.25       | 2"     | Slip-Fit Collector 2.125" primary to fit 2.25" collector | 2 1/8"               | \$ 4.66  |
| CN-CLSC-2375-SS                              | 2.375      | 2"     | Slip-Fit Collector 2.25" primary to fit 2.375" collector | 2 1/4"               | \$ 4.66  |
| CN-CLSC-2500-SS                              | 2.5        | 2"     | Slip-Fit Collector 2.375" primary to fit 2.50" collector | 2 3/8"               | \$ 4.99  |
| CN-CLSC-2625-SS                              | 2.625      | 2"     | Slip-Fit Collector 2.50" primary to fit 2.625" collector | 2 1/2"               | \$ 5.32  |

CALL (714) 828-3580 or (800) 795-5535  
FOR WHOLESALE PRICING